

310G 310SG

BACKHOE LOADERS

SPECIFICATIONS

CONSTRUCTION EQUIPMENT DIVISION

Engine	310G	310SG
Type	John Deere 4045D naturally aspirated standard / John Deere 4045T altitude-compensating turbocharger optional	John Deere 4045T turbocharger
Maximum rated power	79 SAE gross hp (59 kW) / 74 SAE net hp (55 kW) @ 2,200 rpm	89 SAE gross hp (66 kW) / 84 SAE net hp (63 kW) @ 2,000 rpm
<i>John Deere 4045T with altitude-compensating turbocharger</i>	82 SAE gross hp (61 kW) / 78 SAE net hp (58 kW) @ 2,000 rpm	N/A
Cylinders	4	4
Displacement	276 cu. in. (4.524 L)	276 cu. in. (4.524 L)
Fuel consumption, typical	1.1 to 1.9 gal./hr. (4.2 to 7.2 L/h)	1.3 to 2.3 gal./hr. (4.9 to 8.7 L/h)
Torque rise	29 percent	38 percent
With altitude-compensating turbocharger	34 percent	N/A
Maximum net torque	223 lb.-ft. (302 Nm)	273 lb.-ft. (369 Nm)
With altitude-compensating turbocharger	232 lb.-ft. (315 Nm)	N/A
Lubrication	pressure system with spin-on filter and cooler	pressure system with spin-on filter and cooler
Air cleaner	dual stage dry type with safety element, evacuator valve, and prescreener	dual stage dry type with safety element and precleaner
Electrical system	12 volt with 65-amp alternator	12 volt with 65-amp alternator
Sucker-type cooling fan		

Transmission

Four-speed, helical cut gear, collar-shift transmission synchronized in all gears with hydraulic reverser

Torque converter, single stage, dual phase with 2.63:1

stall ratio	11 in. (280 mm)		11 in. (280 mm)	
Travel speeds with 19.5L-24 rear tires	<i>Forward</i>	<i>Reverse</i>	<i>Forward</i>	<i>Reverse</i>
Gear 1	3.6 mph (5.8 km/h)	4.0 mph (6.4 km/h)	3.6 mph (5.8 km/h)	4.0 mph (6.4 km/h)
Powershift			3.6 mph (5.8 km/h)	4.0 mph (6.4 km/h)
Gear 2	5.9 mph (9.5 km/h)	6.6 mph (10.6 km/h)	5.9 mph (9.5 km/h)	6.6 mph (10.6 km/h)
Powershift			5.8 mph (9.3 km/h)	6.7 mph (10.8 km/h)
Gear 3	14.4 mph (23.2 km/h)	16.1 mph (25.9 km/h)	14.4 mph (23.2 km/h)	16.1 mph (25.9 km/h)
Powershift			13.9 mph (22.4 km/h)	16.6 mph (26.7 km/h)
Gear 4	22.0 mph (35.2 km/h)	27.2 mph (43.8 km/h)	22.0 mph (35.2 km/h)	27.2 mph (43.8 km/h)
Powershift			22.0 mph (35.2 km/h)	N/A

Final Drives

Heavy-duty, inboard planetary final drives evenly distribute shock loads over three gears

Brakes

Power-assisted, hydraulic wet disc, mounted inboard, self adjusting and self equalizing

Capacities

Fuel tank (with ground level fueling)	36 gal. (136 L)	36 gal. (136 L)
Engine coolant	17 qt. (16 L)	17 qt. (16 L)
Engine oil including filter	9 qt. (8.5 L)	9 qt. (8.5 L)
Torque converter and transmission	15 qt. (14 L)	15 qt. (14 L)
Hydraulic system	24 gal. (91 L)	24 gal. (91 L)
Rear axle	3.5 gal. (13 L)	3.5 gal. (13 L)
Mechanical-front-wheel-drive axle	2.3 gal. (8.5 L)	2.3 gal. (8.5 L)

Steering

Hydrostatic power steering and emergency steering conform to ISO5010

Non-powered axle

Curb turning radius with brakes	11 ft. 9 in. (3.57 m)	11 ft. 9 in. (3.57 m)
Without brakes	13 ft. 3 in. (4.04 m)	13 ft. 3 in. (4.04 m)
Bucket clearance circle with brakes	31 ft. 6 in. (9.61 m)	31 ft. 6 in. (9.61 m)
Without brakes	34 ft. 7 in. (10.55 m)	34 ft. 7 in. (10.55 m)
Steering wheel turns, stop to stop	2.3 to 3.0	2.3 to 3.0

Mechanical-front-wheel-drive

Curb turning radius with brakes	10 ft. 11 in. (3.34 m)	10 ft. 11 in. (3.34 m)
Without brakes	13 ft. 8 in. (4.17 m)	13 ft. 8 in. (4.17 m)
Bucket clearance circle with brakes	29 ft. 9 in. (9.07 m)	29 ft. 9 in. (9.07 m)
Without brakes	35 ft. 3 in. (10.74 m)	35 ft. 3 in. (10.74 m)
Steering wheel turns, stop to stop	2.5	2.5
Axle oscillations stop to stop, both axles	22 degrees	22 degrees

Axle ratings (SAE J43)

Front	17,340 lb. (7865 kg)	18,860 lb. (8555 kg)
Rear	12,610 lb. (5720 kg)	13,670 lb. (6200 kg)

Hydraulic System

System	open center	open center
Pressure		
Backhoe	3,625 psi (25 000 kPa)	3,625 psi (25 000 kPa)
Loader	2,750 psi (19 000 kPa)	3,000 psi (20 700 kPa)
Pump	gear type	gear type, tandem with unloader
Flow @ 2,200 rpm	28 gpm (106 L/min.)	
Backhoe	36 gpm (136 L/min.)	
Loader	28 gpm (106 L/min.)	
Filter, return oil	10-micron, spin-on enclosed replaceable element	10-micron, spin-on enclosed replaceable element

Cylinders

310G

310SG

	<i>Bore</i>	<i>Stroke</i>	<i>Rod</i>	<i>Bore</i>	<i>Stroke</i>	<i>Rod</i>
Loader boom (2).....	3.15 in. (80 mm)	31.1 in. (790 mm)	1.97 in. (50 mm)	3.15 in. (80 mm)	31.1 in. (790 mm)	1.97 in. (50 mm)
Loader bucket (1).....	3.54 in. (90 mm)	29.3 in. (744 mm)	1.97 in. (50 mm)	3.54 in. (90 mm)	29.3 in. (744 mm)	1.97 in. (50 mm)
Backhoe boom (1).....	4.33 in. (110 mm)	32.3 in. (821 mm)	2.20 in. (56 mm)	4.72 in. (120 mm)	31.3 in. (795 mm)	2.20 in. (56 mm)
Backhoe crowd (1).....	4.33 in. (110 mm)	22.3 in. (566 mm)	2.20 in. (56 mm)	4.53 in. (115 mm)	23.9 in. (607 mm)	2.48 in. (63 mm)
Backhoe bucket (1).....	3.15 in. (80 mm)	35.1 in. (892 mm)	1.97 in. (50 mm)	3.54 in. (90 mm)	31.9 in. (810 mm)	2.20 in. (56 mm)
Backhoe swing (2).....	3.15 in. (80 mm)	12.2 in. (310 mm)	1.77 in. (45 mm)	3.54 in. (90 mm)	10.9 in. (278 mm)	1.97 in. (50 mm)
Backhoe extendable dipperstick (1).....	2.48 in. (63 mm)	41.8 in. (1062 mm)	1.26 in. (32 mm)	2.76 in. (70 mm)	42.0 in. (1067 mm)	1.77 in. (45 mm)
Backhoe stabilizer (2).....	3.15 in. (80 mm)	19.7 in. (500 mm)	1.97 in. (50 mm)	3.54 in. (90 mm)	19.7 in. (500 mm)	1.97 in. (50 mm)
Steering (1) non-powered axle.....	1.97 in. (50 mm)	9.49 in. (241 mm)	0.98 in. (25 mm)	1.97 in. (50 mm)	9.49 in. (241 mm)	0.98 in. (25 mm)
Steering (1) MFWD.....	2.56 in. (65 mm)	8.27 in. (210 mm)	1.42 in. (36 mm)	2.56 in. (65 mm)	8.27 in. (210 mm)	1.42 in. (36 mm)

Tires

	<i>Rear</i>	<i>Front</i>	<i>Rear</i>	<i>Front</i>
With non-powered front axle.....	16.9-24, 8 PR R4 17.5L-24, 10 PR R4 19.5L-24, 8 PR R4	11L-15, 8 PR F3 11L-15, 8 PR F3 11L-16, 12 PR F3	16.9-24, 8 PR R4 19.5L-24, 8 PR R4	11L-15, 8 PR F3 11L-16, 12 PR F3
With mechanical-front-wheel-drive.....	16.9-24, 8 PR R4 19.5L-24, 8 PR R4	12-16.5, 8 PR NHS 12-16.5, 8 PR NHS	19.5L-24, 8 PR R4	12.5/80-18, 10 PR

SAE Operating Weights

With 17.5L-24, 10 PR R4 rear tires; 11L-15, 8 PR F3 front tires; 1.00-cu. yd. (0.76 m ³) loader bucket; and 24-in. x 6.5-cu. ft. (610 mm x 0.18 m ³) backhoe bucket standard.....	12,800 lb. (5806 kg)
With 19.5L-24, 8 PR R4 rear tires; 11L-16, 12 PR F3 front tires; 1.12-cu. yd. (0.86 m ³) loader bucket; and 24-in. x 7.5-cu. ft. (610 mm x 0.21 m ³) backhoe bucket standard.....	13,500 lb. (6124 kg)
Cab adds.....	580 lb. (263 kg)
Mechanical-front-wheel-drive with tires adds.....	370 lb. (168 kg)
Extendable dipperstick excluding required counterweight adds.....	440 lb. (200 kg)
Typical operating weight with cab, MFWD with tires, extendable dipperstick, and two counterweights equaling 900 lb. (408 kg).....	15,090 lb. (6845 kg)
Backhoe bucket coupler adds.....	130 lb. (59 kg)

See backhoe and loader performance data for bucket weights.

Loader Buckets

	<i>Width</i>	<i>Heaped Capacity</i>	<i>Weight</i>	<i>Width</i>	<i>Heaped Capacity</i>	<i>Weight</i>
Heavy-duty long lip*.....	86 in. (2180 mm)	1.00 cu. yd. (0.76 m ³)	710 lb. (322 kg)	86 in. (2180 mm)	1.25 cu. yd. (0.96 m ³)	875 lb. (397 kg)
Heavy-duty long lip**.....	86 in. (2180 mm)	1.12 cu. yd. (0.86 m ³)	940 lb. (426 kg)	92 in. (2340 mm)	1.30 cu. yd. (1.00 m ³)	1,050 lb. (476 kg)
Heavy-duty long lip.....	86 in. (2180 mm)	1.25 cu. yd. (0.96 m ³)	875 lb. (397 kg)			
Multipurpose**.....	82 in. (2078 mm)	1.18 cu. yd. (0.91 m ³)	1,450 lb. (658 kg)	82 in. (2080 mm)	1.18 cu. yd. (0.91 m ³)	1,450 lb. (658 kg)
	86 in. (2180 mm)	1.25 cu. yd. (0.96 m ³)	1,450 lb. (658 kg)	86 in. (2180 mm)	1.25 cu. yd. (0.96 m ³)	1,450 lb. (658 kg)
				92 in. (2340 mm)	1.32 cu. yd. (1.01 m ³)	1,550 lb. (703 kg)

*Pre-drilled for auxiliary cutting edge.

**With auxiliary cutting edge and skid shoes standard.

Backhoe Performance

	<i>With Standard Backhoe*</i>		<i>With Extendable Dipperstick*</i>		<i>With Standard Backhoe**</i>		<i>With Extendable Dipperstick**</i>	
	<i>Retracted</i>	<i>Extended</i>	<i>Retracted</i>	<i>Extended</i>	<i>Retracted</i>	<i>Extended</i>	<i>Retracted</i>	<i>Extended</i>
Digging force, bucket cylinder.....	11,106 lb. (49.4 kN)	11,211 lb. (49.9 kN)	11,211 lb. (49.9 kN)	11,990 lb. (53.3 kN)	12,158 lb. (54.1 kN)	12,158 lb. (54.1 kN)	15,236 lb. (67.7 kN)	15,308 lb. (68.0 kN)
With heavy-duty cylinder option.....								
Digging force, crowd cylinder.....	7,006 lb. (31.2 kN)	6,782 lb. (30.2 kN)	4,844 lb. (21.5 kN)	8,090 lb. (36.0 kN)	7,796 lb. (34.7 kN)	5,628 lb. (25.0 kN)		
Swing arc.....	180 degrees	180 degrees	180 degrees	180 degrees	180 degrees	180 degrees		
Operator control.....	two levers	right foot treadle	right foot treadle	two levers	right foot treadle	right foot treadle		
Bucket rotation.....	190 degrees	190 degrees	190 degrees	190 degrees	190 degrees	190 degrees		
Stabilizer angle rearward.....	18 degrees	18 degrees	18 degrees	18 degrees	18 degrees	18 degrees		
Leveling angle.....	14 degrees	14 degrees	14 degrees	14 degrees	14 degrees	14 degrees		

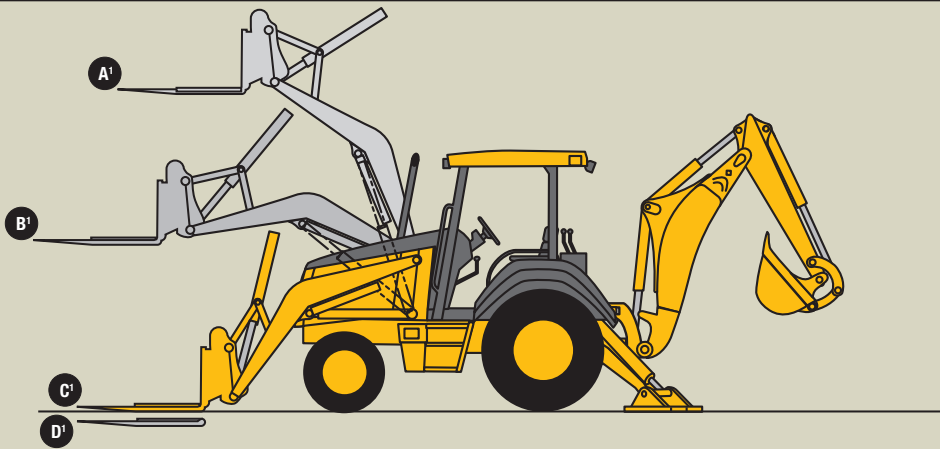
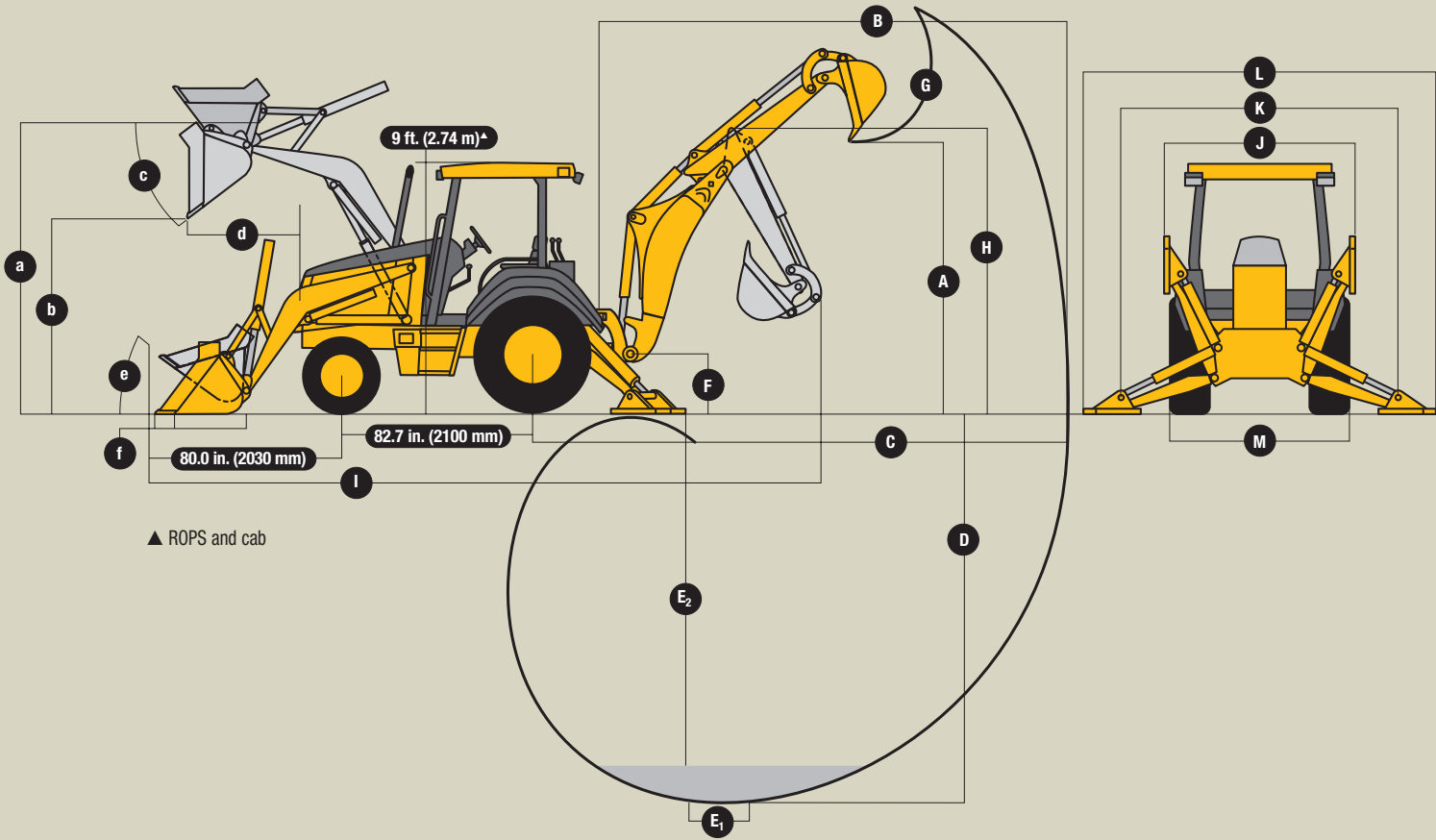
*Backhoe specifications are with 24-in. x 6.5-cu. ft. (610 mm x 0.18 m³) bucket.

**Backhoe specifications are with 24-in. x 7.5-cu. ft. (610 mm x 0.21 m³) bucket.

Backhoe Buckets

	<i>Width</i>	<i>Capacity</i>	<i>Weight</i>	<i>Width</i>	<i>Capacity</i>	<i>Weight</i>
Standard duty.....	18 in. (457 mm)	4.6 cu. ft. (0.13 m ³)	260 lb. (118 kg)	24 in. (610 mm)	7.5 cu. ft. (0.21 m ³)	350 lb. (159 kg)
Heavy duty with lift loop.....	24 in. (610 mm)	6.5 cu. ft. (0.18 m ³)	300 lb. (136 kg)	12 in. (305 mm)	3.3 cu. ft. (0.09 m ³)	295 lb. (134 kg)
	18 in. (457 mm)	5.1 cu. ft. (0.14 m ³)	335 lb. (152 kg)	18 in. (457 mm)	5.1 cu. ft. (0.14 m ³)	335 lb. (152 kg)
	24 in. (610 mm)	7.5 cu. ft. (0.21 m ³)	400 lb. (181 kg)	24 in. (610 mm)	7.5 cu. ft. (0.21 m ³)	400 lb. (181 kg)
	30 in. (762 mm)	10.0 cu. ft. (0.28 m ³)	445 lb. (202 kg)	24 in. (610 mm)	8.8 cu. ft. (0.25 m ³)	420 lb. (191 kg)
				30 in. (762 mm)	10.0 cu. ft. (0.28 m ³)	445 lb. (202 kg)
Severe duty with lift loop.....	18 in. (457 mm)	5.1 cu. ft. (0.14 m ³)	362 lb. (164 kg)	24 in. (610 mm)	7.5 cu. ft. (0.21 m ³)	425 lb. (193 kg)
	24 in. (610 mm)	7.5 cu. ft. (0.21 m ³)	425 lb. (193 kg)	24 in. (610 mm)	8.8 cu. ft. (0.25 m ³)	455 lb. (206 kg)
	30 in. (762 mm)	10.0 cu. ft. (0.28 m ³)	475 lb. (215 kg)	30 in. (762 mm)	10.0 cu. ft. (0.28 m ³)	475 lb. (215 kg)
Ditch cleaning.....	36 in. (914 mm)			36 in. (914 mm)	12.5 cu. ft. (0.35 m ³)	510 lb. (231 kg)

310G Backhoe Loader



Lift Capacity with Quick-Coupler/Forks

310G

A ¹ Maximum height	3,685 lb. (1673 kg)
B ¹ Maximum reach	5,570 lb. (2528 kg)
C ¹ At ground line.....	7,310 lb. (3319 kg)
D ¹ Below ground line	4.4 in. (112.7 mm) to bottom of tine / 2.7 in. (68.3 mm) to top of tine

Backhoe

310G

310SG

	310G			310SG		
	With Standard Backhoe*	With Extendable Dipperstick*		With Standard Backhoe*	With Extendable Dipperstick**	
		Retracted	Extended		Retracted	Extended
A Loading height, truck loading position	10 ft. 11 in. (3.33 m)	11 ft. 1 in. (3.38 m)	13 ft. 11 in. (4.24 m)	11 ft. 3 in. (3.43 m)	11 ft. 7 in. (3.53 m)	14 ft. 1 in. (4.29 m)
B Reach from center of swing pivot	17 ft. 10 in. (5.44 m)	18 ft. 1 in. (5.51 m)	21 ft. 5 in. (6.53 m)	18 ft. 3 in. (5.56 m)	18 ft. 7 in. (5.66 m)	21 ft. 11 in. (6.68 m)
C Reach from center of rear axle	21 ft. 4 in. (6.50 m)	21 ft. 7 in. (6.58 m)	24 ft. 11 in. (7.59 m)	21 ft. 9 in. (6.63 m)	22 ft. 1 in. (6.73 m)	25 ft. 4 in. (7.72 m)
D Maximum digging depth	14 ft. 3 in. (4.34 m)	14 ft. 5 in. (4.39 m)	17 ft. 11 in. (5.46 m)	14 ft. 6 in. (4.42 m)	14 ft. 11 in. (4.55 m)	18 ft. 5 in. (5.61 m)
E Digging depth (SAE):						
(1) 2-ft. (610 mm) flat bottom	14 ft. 2 in. (4.32 m)	14 ft. 4 in. (4.37 m)	17 ft. 10 in. (5.44 m)	14 ft. 4 in. (4.37 m)	14 ft. 9 in. (4.50 m)	18 ft. 3 in. (5.56 m)
(2) 8-ft. (2440 mm) flat bottom	13 ft. (3.96 m)	13 ft. 4 in. (4.06 m)	17 ft. (5.18 m)	13 ft. 4 in. (4.06 m)	13 ft. 9 in. (4.19 m)	17 ft. 6 in. (5.33 m)
F Ground clearance, minimum	12 in. (305 mm)	12 in. (305 mm)	12 in. (305 mm)	13 in. (330 mm)	13 in. (330 mm)	13 in. (330 mm)
G Bucket rotation	190 degrees	190 degrees	190 degrees	190 degrees	190 degrees	190 degrees
H Transport height	11 ft. 3 in. (3.43 m)	11 ft. 2 in. (3.40 m)	11 ft. 2 in. (3.40 m)	11 ft. 6 in. (3.51 m)	11 ft. 5 in. (3.48 m)	11 ft. 5 in. (3.48 m)
I Overall length, transport	23 ft. 3 in. (7.09 m)	23 ft. 3 in. (7.09 m)	23 ft. 3 in. (7.09 m)	23 ft. 6 in. (7.16 m)	23 ft. 6 in. (7.16 m)	23 ft. 6 in. (7.16 m)
J Stabilizer width – transport with ROPS	7 ft. 2 in. (2.18 m)	7 ft. 2 in. (2.18 m)	7 ft. 2 in. (2.18 m)	7 ft. 2 in. (2.18 m)	7 ft. 2 in. (2.18 m)	7 ft. 2 in. (2.18 m)
K Stabilizer spread – operating	10 ft. 2 in. (3.10 m)	10 ft. 2 in. (3.10 m)	10 ft. 2 in. (3.10 m)	10 ft. 2 in. (3.10 m)	10 ft. 2 in. (3.10 m)	10 ft. 2 in. (3.10 m)
L Stabilizer overall width – operating	11 ft. 7 in. (3.53 m)	11 ft. 7 in. (3.53 m)	11 ft. 7 in. (3.53 m)	11 ft. 7 in. (3.53 m)	11 ft. 7 in. (3.53 m)	11 ft. 7 in. (3.53 m)
M Width over tires	81.7 in. (2.07 m)	81.7 in. (2.07 m)	81.7 in. (2.07 m)	86 in. (2.18 m)	86 in. (2.18 m)	86 in. (2.18 m)

*Backhoe specifications are with 24-in. x 6.5-cu. ft. (610 mm x 0.18 m³) bucket.

**Backhoe specifications are with 24-in. x 7.5-cu. ft. (610 mm x 0.21 m³) bucket.

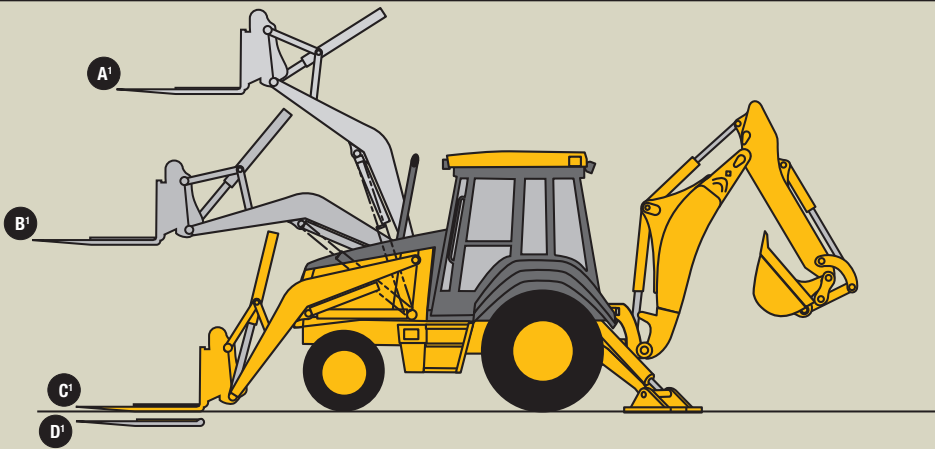
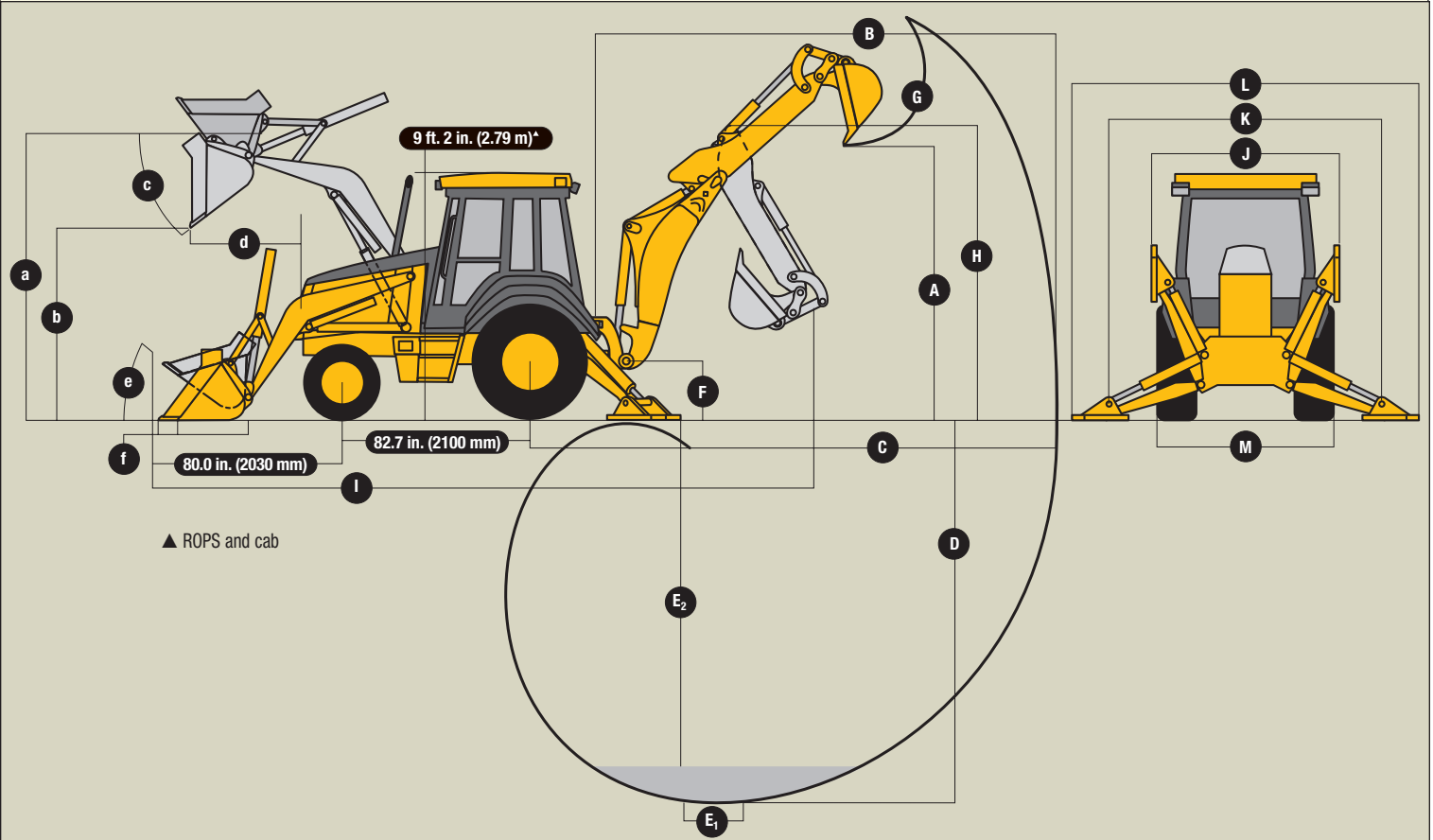
310G Loader Performance with Bucket Options

	1.00-cu. yd. (0.76 m ³) Heavy-Duty Long Lip	1.12-cu. yd. (0.86 m ³) Heavy-Duty Long Lip	1.25-cu. yd. (0.96 m ³) Heavy-Duty Long Lip	1.12-cu. yd. (0.86 m ³) Multipurpose	1.18-cu. yd. (0.91 m ³) Multipurpose	1.25-cu. yd. (0.96 m ³) Multipurpose
Operator control	single lever	single lever	single lever	single lever	single lever	single lever
Breakout force	8,100 lb. (36.0 kN)	7,950 lb. (35.4 kN)	7,603 lb. (33.8 kN)	7,125 lb. (31.7 kN)	7,175 lb. (31.9 kN)	7,125 lb. (31.7 kN)
Lifting capacity, full height	5,800 lb. (2631 kg)	5,600 lb. (2540 kg)	5,558 lb. (2523 kg)	5,100 lb. (2313 kg)	5,150 lb. (2335 kg)	5,100 lb. (2313 kg)
a Height to bucket hinge pin, maximum	11 ft. 1 in. (3.38 m)	11 ft. 1 in. (3.38 m)	11 ft. 1 in. (3.38 m)	11 ft. 1 in. (3.38 m)	11 ft. 1 in. (3.38 m)	11 ft. 1 in. (3.38 m)
b Dump clearance, bucket at 45 degrees	8 ft. 10 in. (2.69 m)	8 ft. 10 in. (2.69 m)	8 ft. 2 in. (2.59 m)	8 ft. 6 in. (2.59 m)	8 ft. 6 in. (2.59 m)	8 ft. 6 in. (2.59 m)
c Bucket dump angle, maximum	45 degrees	45 degrees	45 degrees	45 degrees	45 degrees	45 degrees
d Reach at full height, bucket at 45 degrees	30.9 in. (785 mm)	30.2 in. (767 mm)	31.9 in. (809 mm)	32.2 in. (818 mm)	32.2 in. (818 mm)	32.2 in. (818 mm)
e Rollback angle at ground level	40 degrees	40 degrees	40 degrees	40 degrees	40 degrees	40 degrees
f Digging depth below ground, bucket level	6.3 in. (160 mm)	6.9 in. (175 mm)	5.8 in. (147 mm)	7.8 in. (197 mm)	7.8 in. (197 mm)	7.8 in. (197 mm)
Raising time to full height	5.2 sec.	5.2 sec.	5.2 sec.	5.2 sec.	5.2 sec.	5.2 sec.
Bucket dump time	1.1 sec.	1.1 sec.	1.1 sec.	1.1 sec.	1.1 sec.	1.1 sec.
Bucket lowering time (power down)	1.9 sec.	1.9 sec.	1.9 sec.	1.9 sec.	1.9 sec.	1.9 sec.

310SG Loader Performance with Bucket Options

	1.25-cu. yd. (0.96 m ³) Heavy-Duty Long Lip	1.30-cu. yd. (1.00 m ³) Heavy-Duty Long Lip	1.18-cu. yd. (0.91 m ³) Multipurpose	1.25-cu. yd. (0.96 m ³) Multipurpose	1.32-cu. yd. (1.01 m ³) Multipurpose
Operator control	single lever	single lever	single lever	single lever	single lever
Breakout force	8,817 lb. (39.2 kN)	8,900 lb. (39.6 kN)	8,375 lb. (37.2 kN)	8,325 lb. (37.0 kN)	8,300 lb. (36.9 kN)
Lifting capacity, full height	6,247 lb. (2836 kg)	6,150 lb. (2790 kg)	5,950 lb. (2700 kg)	5,900 lb. (2676 kg)	5,800 lb. (2631 kg)
a Height to bucket hinge pin, maximum	11 ft. 2 in. (3.40 m)	11 ft. 2 in. (3.40 m)	11 ft. 2 in. (3.40 m)	11 ft. 2 in. (3.40 m)	11 ft. 2 in. (3.40 m)
b Dump clearance, bucket at 45 degrees	8 ft. 2 in. (2.59 m)	8 ft. 8 in. (2.64 m)	8 ft. 7 in. (2.62 m)	8 ft. 7 in. (2.62 m)	8 ft. 7 in. (2.62 m)
c Bucket dump angle, maximum	45 degrees	45 degrees	45 degrees	45 degrees	45 degrees
d Reach at full height, bucket at 45 degrees	36.0 in. (911 mm)	30.1 in. (765 mm)	32.2 in. (818 mm)	32.2 in. (818 mm)	32.2 in. (818 mm)
e Rollback angle at ground level	40 degrees	40 degrees	40 degrees	40 degrees	40 degrees
f Digging depth below ground, bucket level	5.8 in. (147 mm)	8.1 in. (206 mm)	7.3 in. (185 mm)	7.3 in. (185 mm)	7.3 in. (185 mm)
Raising time to full height	4.9 sec.	4.9 sec.	4.9 sec.	4.9 sec.	4.9 sec.
Bucket dump time	1.1 sec.	1.1 sec.	1.1 sec.	1.1 sec.	1.1 sec.
Bucket lowering time (power down)	1.9 sec.	1.9 sec.	1.9 sec.	1.9 sec.	1.9 sec.

310SG Backhoe Loader



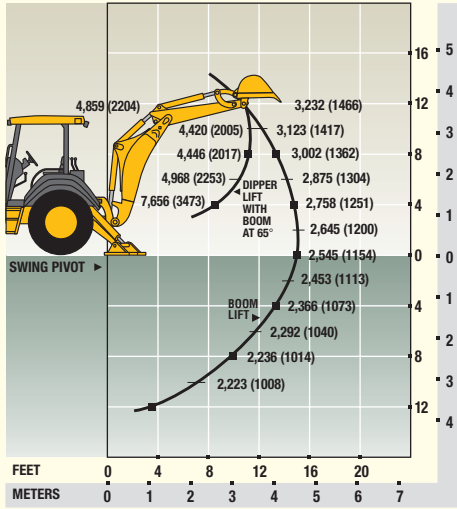
Lift Capacity with Quick-Coupler/Forks

310SG

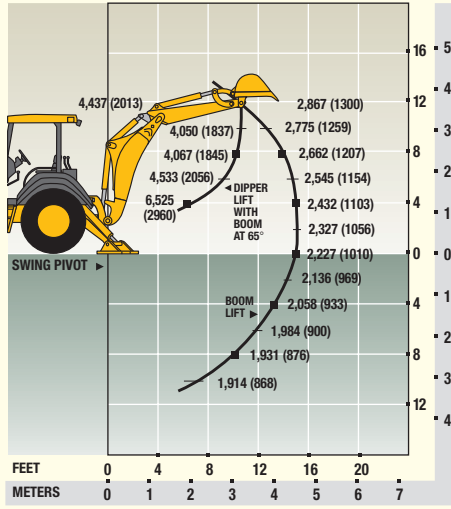
A ¹ Maximum height	4,178 lb. (1897 kg)
B ¹ Maximum reach	6,191 lb. (2810 kg)
C ¹ At ground line	8,232 lb. (3737 kg)
D ¹ Below ground line	4.4 in. (112.7 mm) to bottom of tine / 2.7 in. (68.3 mm) to top of tine

*Lift capacities are over-end values in lb. (kg) according to SAE J31. Figures listed are 87% of the maximum lift force available. Base vehicle includes counterweight.

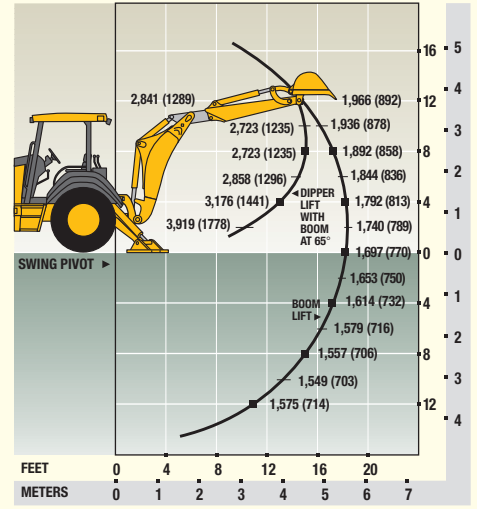
**310G BACKHOE WITH
STANDARD DIPPERSTICK**



**310G BACKHOE WITH 3-FT. 6-IN. (1.07 M)
EXTENDABLE DIPPERSTICK, RETRACTED**

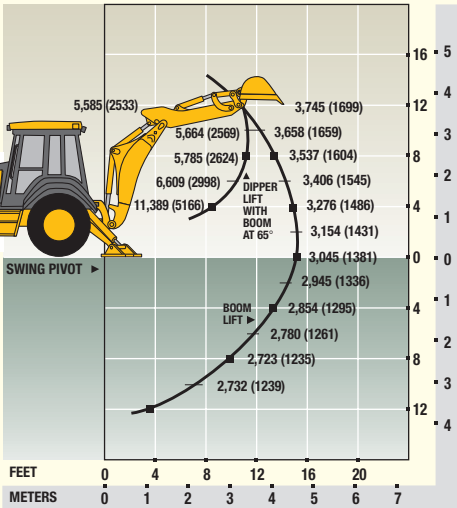


**310G BACKHOE WITH 3-FT. 6-IN. (1.07 M)
EXTENDABLE DIPPERSTICK, EXTENDED**

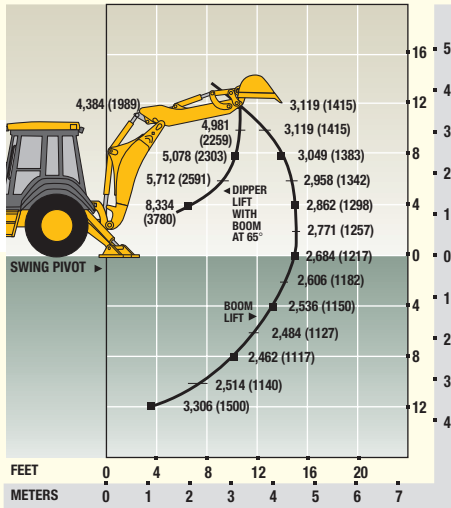


*Lift capacities are over-end values in lb. (kg) according to SAE J31. Figures listed are 87% of the maximum lift force available. Base vehicle includes counterweight.

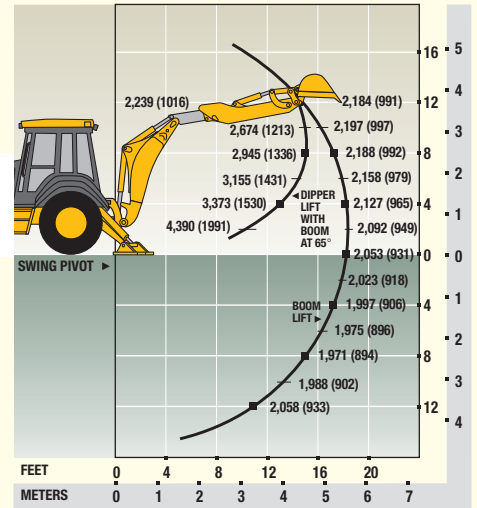
**310SG BACKHOE WITH
STANDARD DIPPERSTICK**



**310SG BACKHOE WITH 3-FT. 6-IN. (1.07 M)
EXTENDABLE DIPPERSTICK, RETRACTED**



**310SG BACKHOE WITH 3-FT. 6-IN. (1.07 M)
EXTENDABLE DIPPERSTICK, EXTENDED**



310G / 310SG Backhoe Loaders

Key: ● Standard equipment ▲ Optional or special equipment

*See your John Deere dealer for further information.

G SG Engine

- John Deere Model 4045D – 4.5 liter, 74 SAE net hp naturally aspirated, isolation mounted
- ▲ John Deere Model 4045T – 4.5 liter, 78 SAE net hp altitude-compensating turbocharged, isolation mounted
- John Deere Model 4045T – 4.5 liter, 84 SAE net hp turbocharged, isolation mounted
- Vertical spin-on engine oil filter
- Vertical spin-on John Deere fuel filter with water separator
- Oil-to-water engine oil cooler
- Antifreeze, -34°F (-37°C)
- Coolant recovery tank
- Serpentine belt with automatic belt tensioner
- Sucker-type cooling fan
- Enclosed safety fan guard
- ▲ High ambient temperature engine cooling
- Dual-element dry-type air cleaner with evacuator valve and prescreener
- Muffler, underhood with curved-end exhaust stack
- ▲ Chrome exhaust extension
- ▲ Electric ether starting aid
- ▲ Engine coolant heater, 1,000 watts

Power Train

- ▲ Collar-shift transmission with torque converter: Fully synchronized four forward, four reverse speeds / Isolation mounted to mainframe
- Powershift transmission: Torque converter with electrically actuated twist grip F-N-R in 1st through 4th gears
- Transmission oil cooler
- Vertical spin-on transmission filter
- Electric forward-neutral-reverse control lever with neutral safety switch interlock
- Electric clutch cutoff on gearshift and loader levers
- Differential lock, electric foot-actuated
- Planetary final drives
- Power-assisted hydraulic service brakes (conform to SAE J1473): Inboard, wet multi-disc, self adjusting and self equalizing
- Parking/emergency brake with electric switch control (conforms to SAE J1473): Spring applied, hydraulically released wet multi-disc / Independent of service brakes
- Hydrostatic power steering with emergency manual mode
- Non-powered front axle
- ▲ Mechanical-front-wheel-drive: Electric on/off control / Drive-shaft guard / Sealed axle
- ▲ Mechanical-front-wheel-drive with limited-slip differential: Electric on/off control / Drive-shaft guard / Sealed axle
- 11L-15 F3 front tires
- ▲ 11L-16 F3 front tires
- ▲ 12-16.5 traction front tires
- ▲ 12.5/80-18 traction front tires
- 16.9-24 R4 rear tires
- ▲ 17.5L-24 R4 rear tires
- ▲ 19.5L-24 R4 rear tires
- ▲ Rear wheel spacers for use with chains

Backhoe

- Backhoe with standard dipperstick, 14-ft. 3-in. digging depth
- Backhoe with standard dipperstick, 14-ft. 6-in. digging depth
- Two-lever (Deere) backhoe controls
- ▲ Three-lever (Case) backhoe controls
- ▲ Four-lever (Ford) backhoe controls
- ▲ SAE excavator two-lever backhoe controls
- Backhoe transport lock lever
- Swing lock pin stored in operator's station

G SG Backhoe (continued)

- Stabilizer valve with two-direction anti-drift valves
- Pivoting stabilizers with dirt pads
- ▲ Pivoting stabilizers with reversible pads
- ▲ Extended stabilizers*
- ▲ Stabilizer cylinder guards
- Less bucket, with bucket pins
- ▲ Standard-duty backhoe bucket with lift loops
- ▲ Heavy-duty backhoe bucket with lift loops
- ▲ Severe-duty backhoe bucket with lift loops
- ▲ Backhoe coupler for "C," "D," "E," and "G" Series John Deere buckets, Case buckets, and Cat buckets
- ▲ Extendable dipperstick, 3-ft. 6-in. extension
- ▲ Auxiliary backhoe valve for swingers, thumbs, etc.
- ▲ Auxiliary backhoe valve for hammers, compactors
- ▲ Auxiliary backhoe plumbing for hammers, compactors
- ▲ Auxiliary backhoe plumbing for swingers, thumbs, etc.
- ▲ SAE-controlled load-lowering device valves

Loader

- Hydraulic self leveling
- Return-to-dig feature
- Single-lever control with electric clutch cutoff switch
- Bucket-level indicator
- Loader boom service lock
- ▲ Ride control
- ▲ Auxiliary loader hydraulics with two-lever control
- ▲ Hydraulic coupler for buckets, forks, etc.
- Less bucket, with bucket pins
- ▲ Heavy-duty loader bucket with lift loops, pre-punched for bolt-on cutting edge
- ▲ Heavy-duty loader buckets with bolt-on cutting edges, skid plates, and lift loops
- ▲ Multipurpose loader buckets with bolt-on cutting edges, skid plates, and lift loops

Hydraulic System

- 28-gpm (106 L/min.) gear pump, open-center system
- 36-gpm (136 L/min.) tandem gear pump, open-center system
- Independent hydraulic reservoir
- Swing-down hydraulic oil cooler
- "O"-ring face seal connectors
- 10-micron vertical spin-on filter

Electrical

- 12-volt system
- 65-amp alternator
- Single battery with 150-min. reserve capacity and 750 CCA
- ▲ Dual batteries with 300-min. reserve capacity and 1,500 CCA
- Positive terminal battery cover
- Blade-type multi-fused circuits
- By-pass start safety cover on starter

Lights

- Four halogen driving/work lights, 32,500 candlepower each (two front and two rear)
- ▲ Six additional halogen work lights, 32,500 candlepower each (two front, two rear, and two side)
- Two front and two rear turn signal/flashing
- Two rear stop and tail
- Two rear reflectors
- ▲ Rotating beacon

Operator's Station

- Modular-design ROPS/FOPS canopy with molded roof (conforms to SAE J1040): Isolation mounted
- Left and right access
- Slip-resistant steps and ergonomically located handholds
- Molded floor mat

G SG Operator's Station (continued)

- Headliner
- Coat hook
- 12-volt outlets (2)
- Built-in beverage holders
- Built-in Operator's Manual storage compartment with manual
- Interior rearview mirror
- ▲ Outside rearview mirrors
- Hand throttle with fuel-economy setting at 2,100 rpm
- Suspended foot throttle
- ▲ Tilt steering
- Horn
- Key start switch with electric fuel shutoff
- Engine coolant temperature gauge, illuminated electronic, with audible warning
- Oil temperature gauge, illuminated electronic, with audible warning
- Fuel gauge, illuminated electronic
- Digital display of engine hours, engine rpm, and system voltage
- Monitor system with audible and visual warnings: Engine air restriction indicator / Engine oil pressure indicator with audible warning / Hydraulic filter restriction indicator / Parking brake on/off indicator with audible warning / Seat belt indicator / Low brake pressure
- Non-suspension vinyl swivel seat without armrests
- ▲ Suspension vinyl swivel seat with armrests and lumbar support
- ▲ Suspension fabric swivel seat with armrests and lumbar support
- ▲ Air suspension vinyl swivel seat with armrests and lumbar support
- ▲ Air suspension fabric swivel seat with armrests and lumbar support
- 2-in. seat belt with retractors
- ▲ 3-in. seat belt with retractors
- ▲ Cab: Headliner, dome light, left and right cab doors, tinted safety glass, one rear and one front windshield wiper, fresh air intake heater/defroster/pressurizer (40,000-Btu/hr. [11.7 kW] heater), and 65-amp alternator standard / Front windshield washer, air conditioning (26,000-Btu/hr. [7.6 kW] output and CFC-free R134a refrigerant), 95-amp alternator, and AM/FM/weatherband radio optional / 12-volt outlets (3)

Overall Vehicle

- One-piece unitized construction mainframe
- Vehicle tiedowns, two front and one rear
- Remote grease bank for front axle
- Rigid-mounted front bumper
- ▲ 400-lb. (181 kg) front counterweight
- ▲ 650-lb. (295 kg) front counterweight
- ▲ 900-lb. (408 kg) front counterweight
- ▲ 1,150-lb. (522 kg) front counterweight
- ▲ 1,400-lb. (635 kg) front counterweight
- Fuel tank, 36 gal. (136 L), ground-level fueling
- Two-position easy-tilt hood
- ▲ Front grille screen
- Vandal protection for instrument panel, engine hood, toolbox, hydraulic reservoir, radiator, and fuel tank
- Reverse warning alarm: Switchable to 97 dB(A) or 111 dB(A)
- Dent-resistant full-coverage rear fenders
- ▲ Front fenders*
- ▲ SMV emblem
- ▲ Rental decal kit
- ▲ Special color paint*



JOHN DEERE

Net engine power is with standard equipment including air cleaner, exhaust system, alternator, and cooling fan, at standard conditions per SAE J1349 and DIN 70 020, using No. 2-D fuel at 35 API gravity. No derating is required up to 5,000-ft. (1500 m) altitude for the 310G and up to 10,000-ft. (3050 m) for the 310G with optional altitude-compensating turbocharger and the 310SG. Gross power is without cooling fan.

Specifications and design subject to change without notice. Wherever applicable, specifications are in accordance with SAE standards. Except where otherwise noted, these specifications are based on a 310G unit with 17.5L-24, 10 PR R4 rear tires, 11L-15, 8 PR F3 front tires, 1.00-cu. yd. (0.76 m³) loader bucket, and 24-in. x 6.5-cu. ft. (610 mm x 0.18 m³) backhoe bucket; and a 310SG unit with 19.5L-24, 8 PR R4 rear tires, 11L-16, 12 PR F3 front tires, 1.12-cu. yd. (0.86 m³) loader bucket, and 24-in. x 7.5-cu. ft. (610 mm x 0.21 m³) backhoe bucket.

